

etrix - iLMS
Create – Manage - Distribute



iLMS - Simply Learning

‘Learning has never been easier, plug in or off the shelf courses, select learner groups and activate the iLMS’

Do you want to deploy your training to customised user groups?
Do you have multiple course catalogues and problems capturing results in a centralized area. If the answers are Yes, etrix iLMS can offer a cost effective solution.

The iLMS provides a complete overview of available course offerings tailored to the learners’ roles within the organization. The iLMS serves as an access point (portal) to all learning-related activities, providing personalized information, intuitive navigation, and a quick orientation to the educational environment.

The iLMS has the ability to capture assessment results from the learner’s activities. The relevant courses proposed for each learner can range from Web-based training and virtual classroom sessions to computer-based training or traditional classroom training.

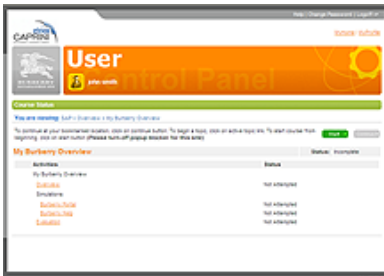
From a personalized user home page the iLMS helps the learner to see all the courses allocated to him through the administrator. Any course can be launched by a simple click of a button. Additionally learners can access and view the complete course catalogue and select the course they require.

Learners are provided personalized access to learning content via the iLMS. Personalized course offerings can be linked to individuals and further linked to the employees development plan or annual requirements for new skills development.

How the iLMS work

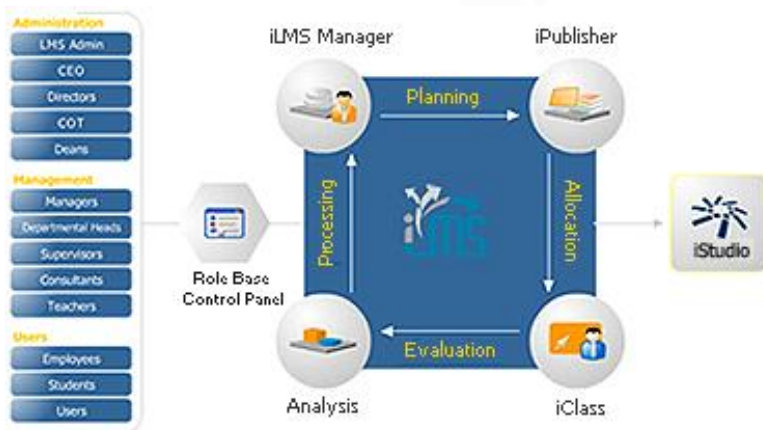
When a course is launched, the iLMS' content player pulls the course together from its structure and presents it to the learner in a separate browser. If the courseware has been developed by etriox or using the iPublisher the course is displayed within the iStudio framework.

Learners can navigate through the course from beginning to end. Should the course be interrupted or stopped the iLMS saves information about the learners progress to date. This information is then available to the learner on the main course page. Only when the course is completed the course will show as being completed.



iLMS User Control Panel

The administrator can set up rules specifying when a learner has completed a course. Example, the learner may have to complete the course and also fill out an assessment form and further reach a desired level before the learner can be considered as having completed the course.



iLMS key features

- **Course Management**
 - Customisable catalogue structures
 - Powerful course allocation
 - Multiple level course allocation
- **User Management**
 - Customize user profiles
 - Upload from Outlook
- **Advance Control Panels**
 - Easy to use Admin panel
 - Segregation of user rights and roles
- **User Performance Analysis**
 - Track user performance per course
 - Review user performance history
- **Class Management**
 - Allocate and manage classes
 - Assign e-learning content to class schedules
 - Track user attendance
 - Capture and report on user quiz performance
- **Corporate Reporting**
 - Catalogue of reports provided as standard
 - Additional reporting available

Key Capabilities

- Create, Manage and Distribute** - Rapid deployment learning content
- SCORM 1.2** - Compliant to industry standard
- Plug & Play** - Easy integration for off the shelf courseware
- HR Integration** - Seamless integration with Corporate HR system
- On Demand Delivery** - Deliver classroom training

Business Benefits

- Centralized repository for all learning content
- Empowers learners to manage own training
- Cost effective licensing costs
- Build corporate knowledge base

training, anytime, anyplace, anywhere.....